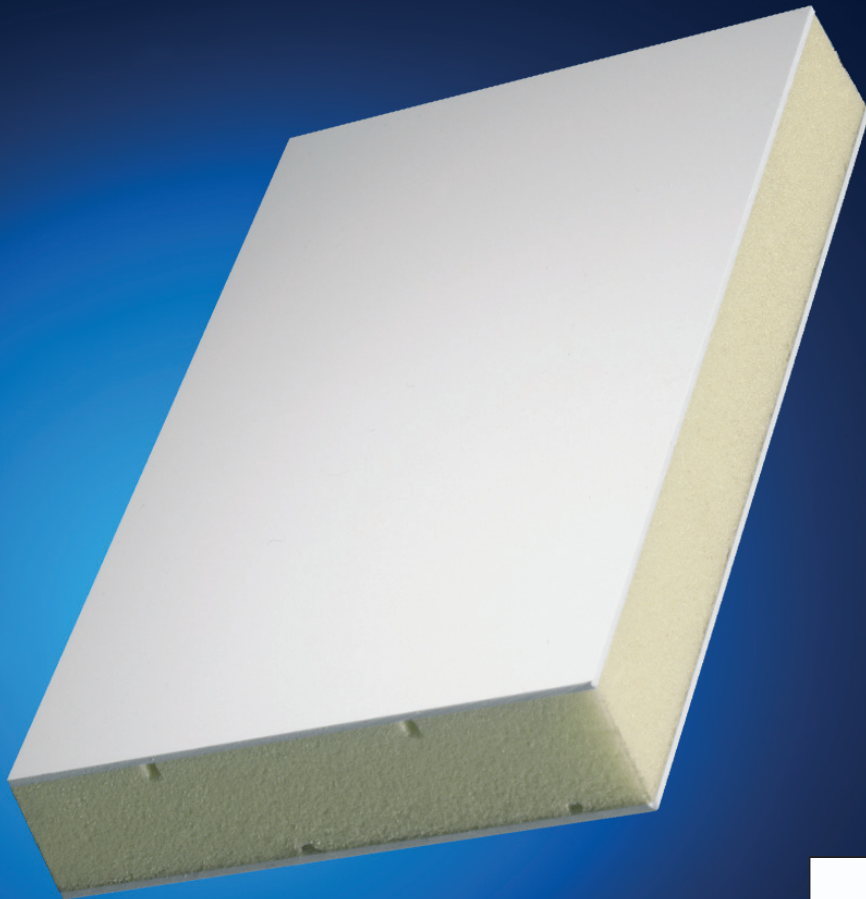




**STADUR**  
Innovation und Systemlösungen



# Stadur Verbundelement FB-1

**The PVC Composite Board**

# Product Information

## Stadur Composite Element FB-1



### Description:

FB-1 composite elements consist of an extruded polystyrene core, with hard-PVC facings on both sides, 1.0 mm, 1.5 mm or 2.0 mm thick. The composite element is covered with a protective foil on both sides. The edges are squared on all sides. The quality of the FB-1 composite element is monitored in accordance with DIN 18164.



### Properties:

Very good thermal insulation  
UV-resistant (5 years manufacturer's guarantee for the PVC facings)  
Good sound insulation value  
High impact resistance  
Easy to process with the usual wood and metal working tools.



### Facings:

Hard PVC compact panels on both sides, 1.0 mm, 1.5 mm or 2.0 mm.

Standard colours:

similar to RAL 9016 brilliant or matt; Veka white, similar to RAL 9016, satined 65% brilliance; Kömmerling/Rehau white; Salamander white; Deceuninck white; Trocal white, similar to RAL 1013, similar to RAL 1015, similar to RAL 9001.

Please refer to the current price list for valid formats and thicknesses of each colour



### Foam core:

Extruded polystyrene foam, CFC-free or CO<sub>2</sub> foamed, low vapour permeability, lowest water absorbance B 1 in accordance with DIN 4102. The foam core is corrugated for optimum adhesion.  
No dust release during processing.



### Overall thickness:

20 mm and 24 mm

Further thicknesses (thicker / thinner) of the facing layers or the foam core available on request.



### Formats:

2000 x 1000 mm      3000 x 2000 mm (white, satined)

3000 x 1500 mm      4000 x 2000 mm (white, satined)

Other formats and standard sizes are available on request.



### U and dB values:

The stated dB values are substantiated by a test certificate.

Thickness	Facings	U value	dB value	kg/m <sup>2</sup>	Facings	U value	dB value	kg/m <sup>2</sup>
20 mm	1.5 mm	1.35	4.88		2.0 mm	1.41	30	6.24
24 mm	1.5 mm	1.14	5.04		2.0 mm	1.19	32	6.40
29 mm	1.5 mm	0.96	5.24		2.0 mm	0.99	32	6.60
34 mm	1.5 mm	0.83	5.44		2.0 mm	0.85	27	6.80
44 mm	1.5 mm	0.65	5.84		2.0 mm	0.66	28	7.20



### Special elements:

Stadur FB-1 composite elements can be supplied with optimised sound insulation values by incorporating special sound insulation panels, or with intrusion-inhibiting aluminium inserts, with test certificate. Edge jointing inserts of wood, plastic or aluminium and edge finishing of the foam core as a stepped rebate or tongue and groove are possible. Other core materials, e.g. polyurethane foam, mineral wool or honeycomb construction materials are available on request.



### Note:

Due to the thermoplastic material properties of PVC, we advise against the use of coloured facings for outdoor use. In the case of subsequently painted elements, for which Stadur has given no written release, any claim under the guarantee is void. Due to considerably better sound insulation values and a clearly quieter element, we recommend the use of 2.0 mm facing layers. When solvent-based substances are employed, polyurethane foam must be used as the core. Please also note our recommendations concerning the protective foil of the PVC boards.

Please refer to the processing instructions for further information.



### Areas of application:

Window panels  
Door panels  
Facade elements

Breastwork  
Partition walls  
Vehicle construction

Advertising signs  
Exhibition construction