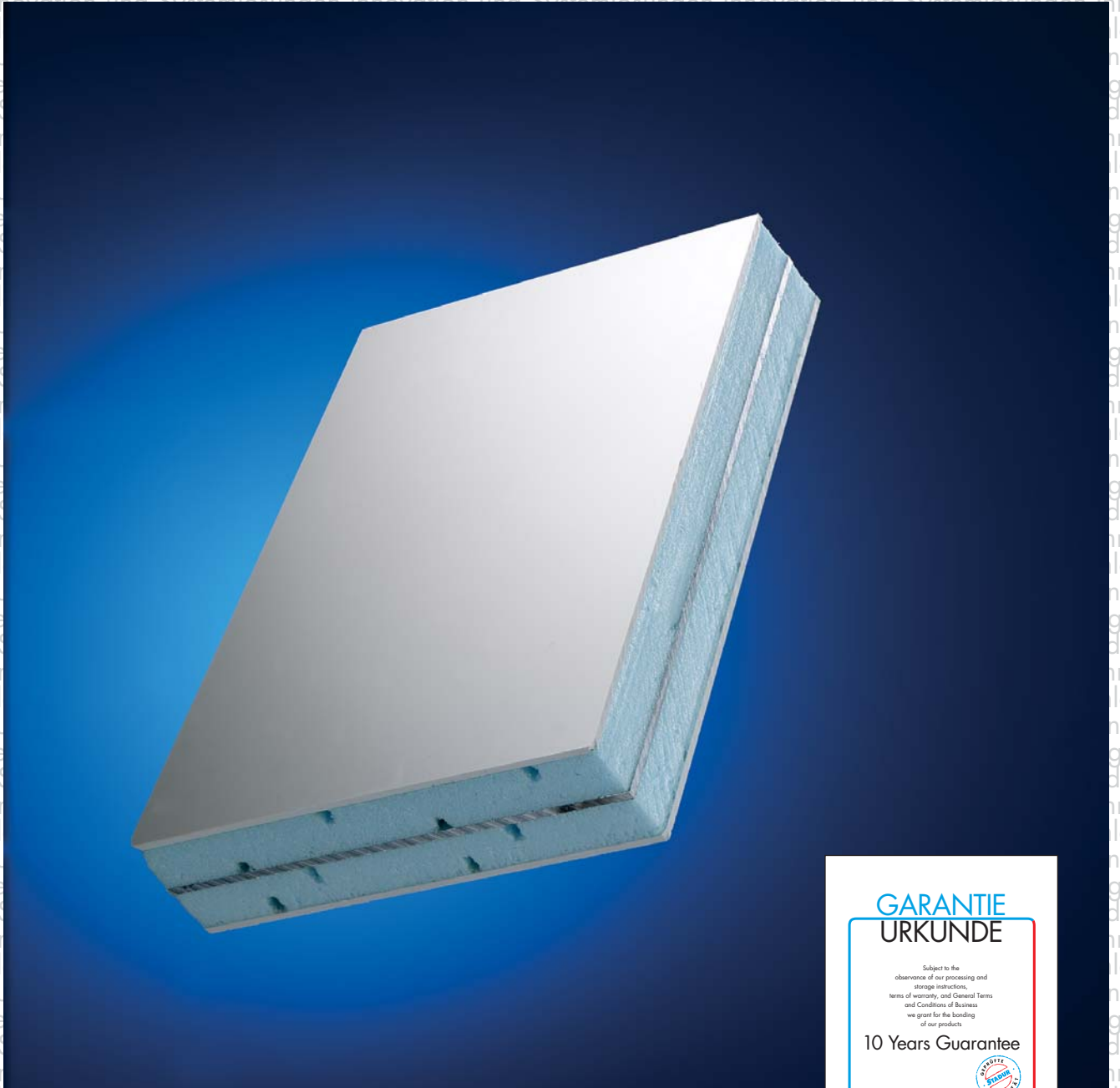




STADUR

Innovation und Systemlösungen

Made in Germany



GARANTIE URKUNDE

Subject to the
observance of our processing and
storage instructions,
terms of warranty, and General Terms
and Conditions of Business
we grant for the bonding
of our products

10 Years Guarantee



STADUR
Innovation und Systemlösungen

Stadur Produktion GmbH & Co. KG
Ottensheim 24 0-2016 (Germany)
Telefon +49 (0) 4144 254 0 - Telefax +49 (0) 4144 254 100
E-Mail: stadur@stadur.com - www.stadur.com

Stadur Protec

The Secure Solution for all Stadur Composite Boards

Information Produit

Stadur Protec



In response to the increased demand for intruder protection in window and door construction, we have had tests performed on our Stadur FB Standard and Special Elements by the "Testing Institute for Door Technologies and Intruder Security", (Prüfinstitut Türetechnik und Einbruchssicherheit) in Rosenheim, Germany.

The areas of application for Stadur FB Composite Elements range from breastwork panelling for intruder-resistant windows, according to DIN V 18054 - up to resistance classification EF3, to intruder-resistant doors according to DIN V18103 - up to resistance classification ET3.

The main emphasis of development was placed on the subsequent further processing of the Composite Elements.

Due to this, it was decided to exclude sheet steel plating as a security insert.

Through the incorporation of special aluminium inserts instead, all processing steps such as cutting, drilling and milling can be performed without causing excessive extra work.

We can of course also provide sheet steel inserts in various thicknesses on request.

"Throw-through" Resistance

Type: (Standard)	Facing	Test Result	Insert
Stadur FB-1	PVC 1.5 mm	A3	none
Stadur FB-4	Aluminium 1.5 mm	A3	none

"Break-through" Resistance

Type: (Special)	Facing	Test Result	Insert
Stadur FB-1	PVC 2.0 mm	B 1 and B 3	B1 = 3 mm /B3 = 4 mm
Stadur FB-SPH	Plywood 4.0 mm	B 1 and B 3	B1 = 3 mm /B3 = 4 mm
Stadur FB-2	Laminate 2.0 mm	B 1 and B 3	B1 = 3 mm /B3 = 4 mm
Stadur FB-4	Aluminium 1.5 mm	B3	– /B3 = 3 mm

The tests performed for "Throw-through" resistance were modelled on DIN 52290 Part 4; for "Break-through" resistance on DIN 52290 Part 3, in accordance with the Resistance Classifications.