



STADUR

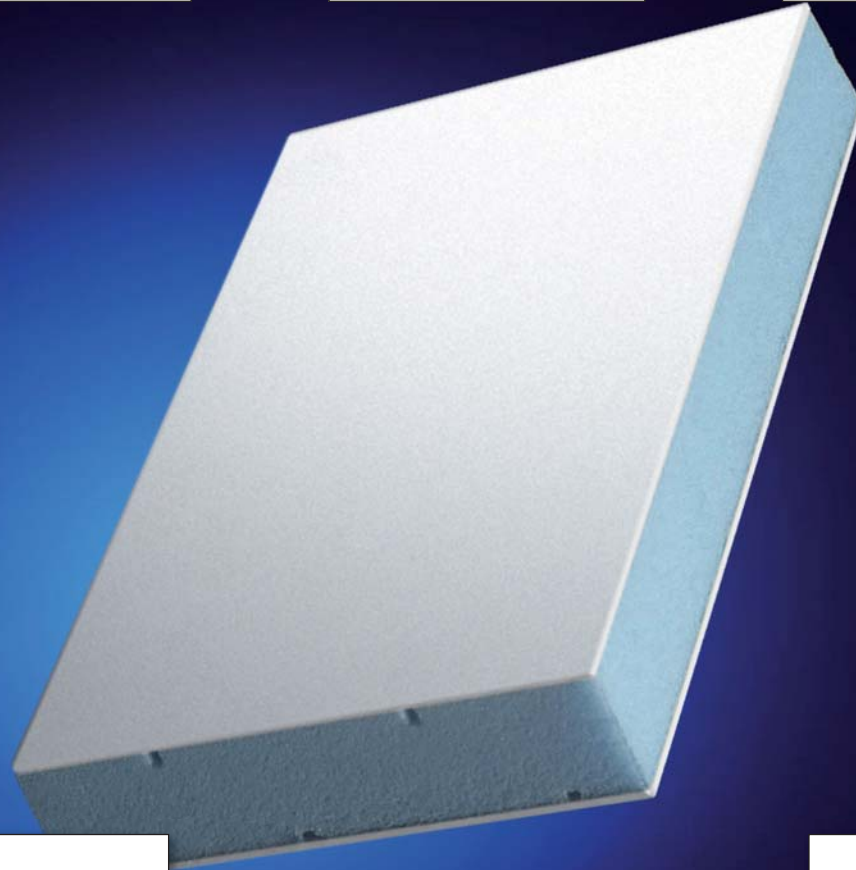
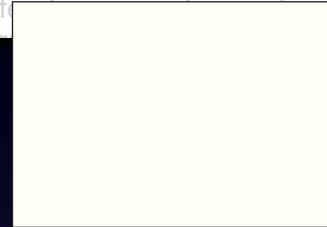
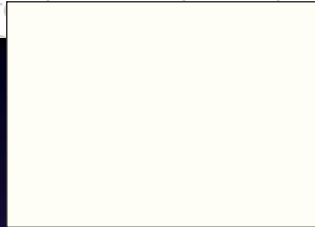
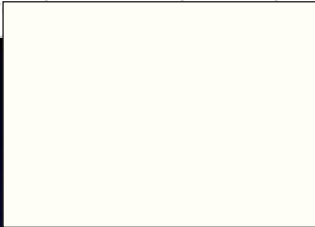
Innovation und Systemlösungen

Made in Germany

matt

silk-matt

brilliant



UV-GARANTIE STADURLON

We confirm the following characteristics of white Stadurlon plastic sheets:

- Whichever product for a period of 10 years starting with the delivery date and according to the following test specifications. These specifications are valid for the outdoor application in Europe, north of the 47th parallel.
- Resistance to artificial weathering is determined following DIN EN ISO 4892-2 standard.
- After exposure to an irradiation energy of 0.8 MJ/m², colour differences in contrast to the original sample do not exceed degree 4 of the grey scale according to ISO 105-A1. The testing has to be performed on stressed sheets.
- In case of warranty implementation, we will replace defective goods by equivalent products free of charge. Further claims, such as replacement or repair of defective products which have not been delivered by us are excluded.
- The proof of increased colour resistance is incumbent on the customer.
- Furthermore, our General Conditions of Sale apply.

10 Years Guarantee



Stadur Produktion GmbH & Co. KG
Ottensheim 2-4 | D-23714 Hemsloh
Telefon +49 (0) 4144 234 0 | Telefax +49 (0) 4144 234 100
E-Mail: info@stadur.com - www.stadur.com

GARANTIE URKUNDE

Subject to the observance of our processing and storage instructions, terms of warranty, and General Terms and Conditions of Business we grant for the bonding of our products

10 Years Guarantee



Stadur Produktion GmbH & Co. KG
Ottensheim 2-4 | D-23714 Hemsloh
Telefon +49 (0) 4144 234 0 | Telefax +49 (0) 4144 234 100
E-Mail: info@stadur.com - www.stadur.com

Stadur Verbundelement FB-1/SL

The Stadurlon Composite Board

Product Information

Stadur Composite Element FB-1/SL



Description:

FB-1/SL composite elements consist of an extruded polystyrene core, with Stadurlon facings on both sides, 0.8 mm, 1.0 mm, 1.5 mm or 2.0 mm thick.

The composite element is covered with a protective foil on both sides.

10 years Stadur Guarantee.



Properties:

- very good thermal insulation
- **UV-Endurance - 10 years Stadurlon UV-Guarantee**
- high impact resistance even in low temperatures
- easy to process with usual wood and metal working tools



Facings:

Stadurlon is a new efficient plastic material, which is applicable for the use from -20°C up to +120°C.

The special surface is highly UV-Resistant. Stadurlon compact plate are both sided:

- 0.8 mm with matt surface as standard incl. protective foil.
- 1.0 mm, 1.3 mm, 1.5 mm or 2.0 mm silk-matt surface as standard incl. protective foil.

Standard colour white similar to RAL 9016 in matt, silk-matt or brilliant.

Please refer to the current price list for valid formats and thicknesses of each colour.



Foam core:

Extruded polystyrene foam, CFC-free or CO₂ foamed, low vapour permeability, lowest water absorbance B 1 in accordance with DIN 4102.

The foam core is corrugated for optimum adhesion. No dust release during processing.



Overall thickness:

20 mm and 24 mm

Further thicknesses (thicker / thinner) of the facing layers or the foam core available on request.



Formats:

2000 x 1000 mm 3000 x 2000 mm

3000 x 1500 mm 4000 x 2000 mm

Other formats and standard sizes are available on request.



U-values and kg/m²:

Thickness	Facings	U-Value	kg/m²	Facings	U-Value	kg/m²	Facings	U-Value	kg/m²	Facings	U-Value	kg/m²	Facings	U-Value	kg/m²
20 mm	0.8 mm	1.40	2.52	1.0 mm	1.40	2.99	1.3 mm	1.46	3.66	1.5 mm	1.37	4.13	2.0 mm	1.53	5.28
24 mm	0.8 mm	1.20	2.66	1.0 mm	1.20	3.13	1.3 mm	1.25	3.80	1.5 mm	1.19	4.27	2.0 mm	1.29	5.42
29 mm	0.8 mm	1.02	2.84	1.0 mm	1.02	3.31	1.3 mm	1.05	3.98	1.5 mm	1.02	4.45	2.0 mm	1.08	5.60
34 mm	0.8 mm	0.89	3.01	1.0 mm	0.89	3.48	1.3 mm	0.91	4.15	1.5 mm	0.89	4.63	2.0 mm	0.93	5.77

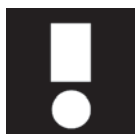


Special elements:

Stadur FB-1/SL composite elements can be supplied with optimised sound insulation values by incorporating special sound insulation panels, or with intrusion-inhibiting aluminium inserts, with test certificate.

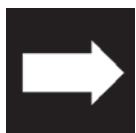
Edge jointing inserts of wood, plastic or aluminium and edge finishing of the foam core as a stepped rebate or tongue and groove are possible.

Other core materials, e.g. polyurethane foam, mineral wool or honeycomb construction materials are available on request.



Note:

In the case of subsequently painted elements, for which Stadur has given no written release, any claim under the guarantee is void. Due to considerably better sound insulation values and a clearly quieter element, we recommend the use of 2.0 mm facing layers. When solvent-based substances are employed, polyurethane foam must be used as the core. Please also note our recommendations concerning the protective foil of the Stadurlon boards. Please refer to the processing instructions for further information.



Areas of application:

Window panels
Door panels
Facade elements

Container construction
Cooling chambers

Breastwork
Partition walls
Vehicle construction

Advertising signs
Exhibition construction

The reproduction of colours and surfaces corresponds to the technical print possibilities. In case of exact colour and surface adjustment we approve to require an original.
Technical changes reserved.